



# **CAMBRIDGE DOOR SERVICES LIMITED**

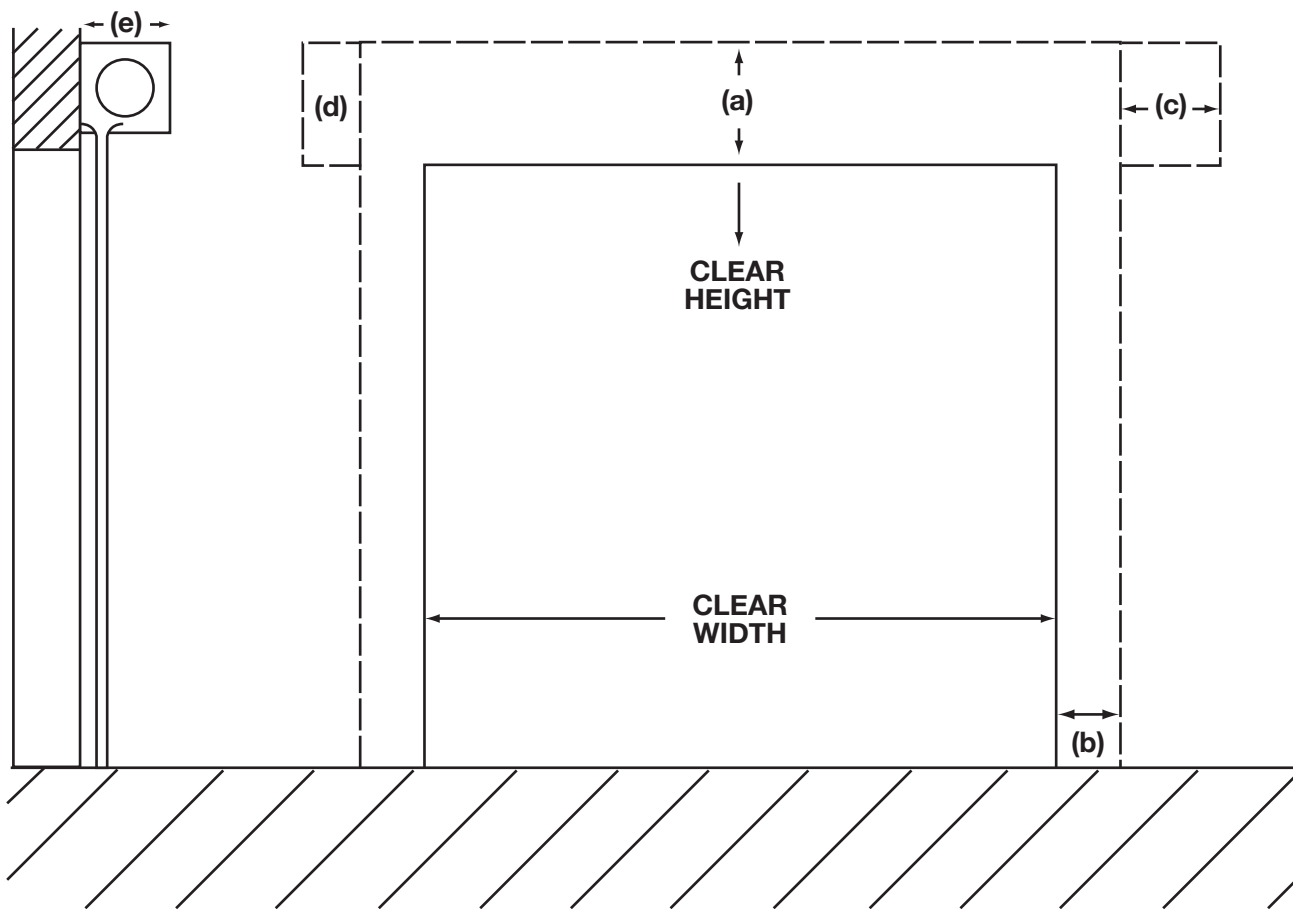
Cambridge Door Services Limited  
Unit A, 127 Mereside Industrial Estate  
Soham, Cambs, CB7 5EQ, England

**Tel: 01353 725000**

**Fax: 01353 725001**

Email: [info@cambridgedoorservices.com](mailto:info@cambridgedoorservices.com)

Web: [www.cambridgedoorservices.com](http://www.cambridgedoorservices.com)



**MANUALLY OPERATED STEEL ROLLER SHUTTER - HAND CHAIN OPERATION  
FACE FITTING TO BUILDING FABRIC  
HEADROOM AND SIDEROOM REQUIREMENTS**

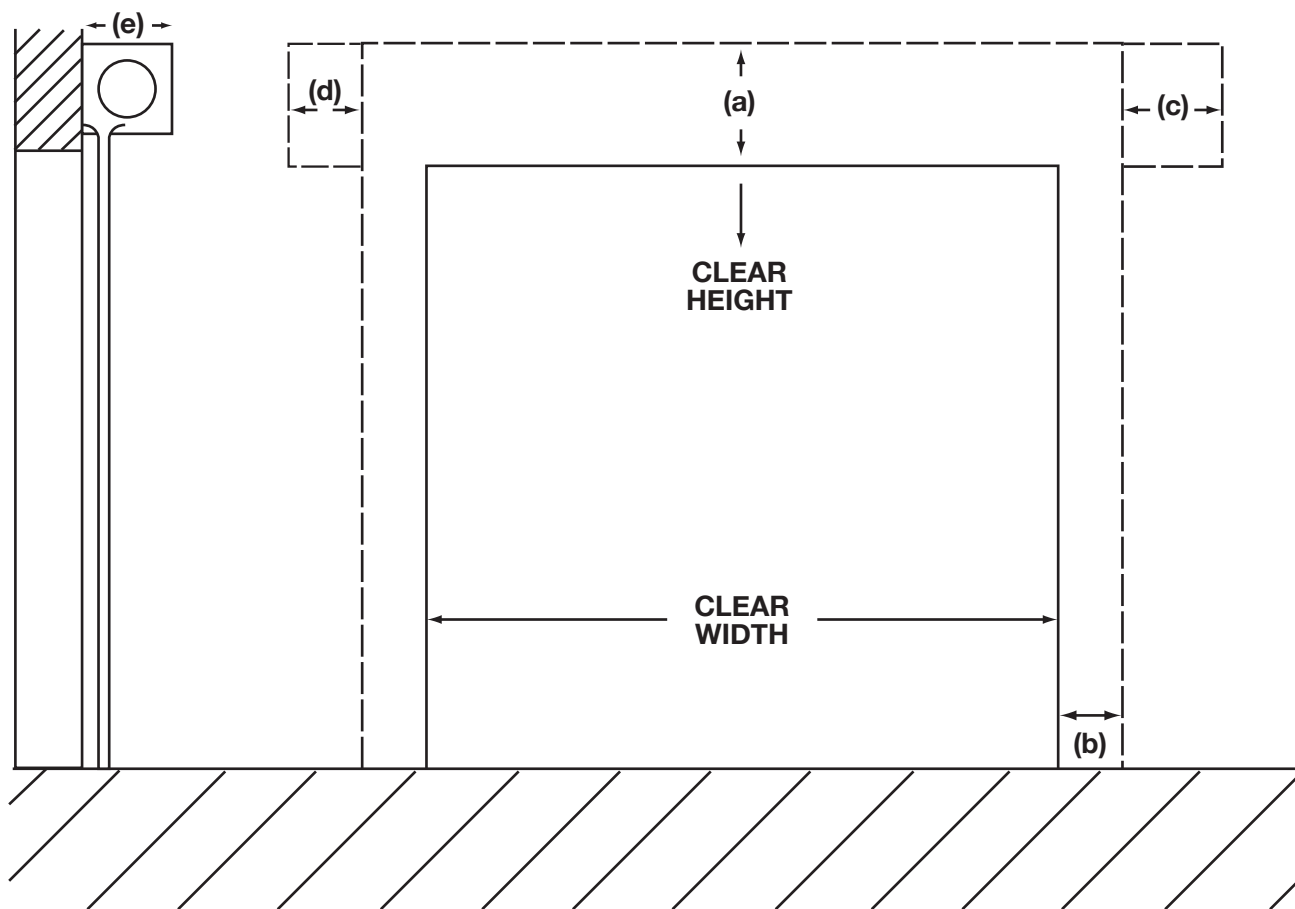
- (a) 0-2500<sup>C/H</sup> = 350 2500 - 5000<sup>C/H</sup> = 400
- (b) STANDARD GUIDE = 85 WIDER DOORS = 105
- (c) HAND CHAIN UNIT - MINIMUM = 80 (L or R HAND)
- (d) SAFETY BRAKE MECHANISM = 50 (L or R HAND)
- (e) 0-2500<sup>C/H</sup> = 300 2500 - 4000<sup>C/H</sup> = 350 4000+<sup>C/H</sup> = 400

**DOOR WEIGHT - GENERAL GUIDE**

0-16sqm = CURTAIN 11kg/sqm + 150kg  
 16-25sqm = CURTAIN 15kg/sqm + 300kg

**NOTE:**

**SIDEROOM REQUIREMENT IS INCREASED IF FIXING POINT IN BRICKWORK ARE INADEQUATE.**



## ELECTRICALLY OPERATED ROLLER SHUTTER - HEAVY DUTY MOTOR FACE FITTING TO BUILDING FABRIC HEADROOM AND SIDEROOM REQUIREMENTS

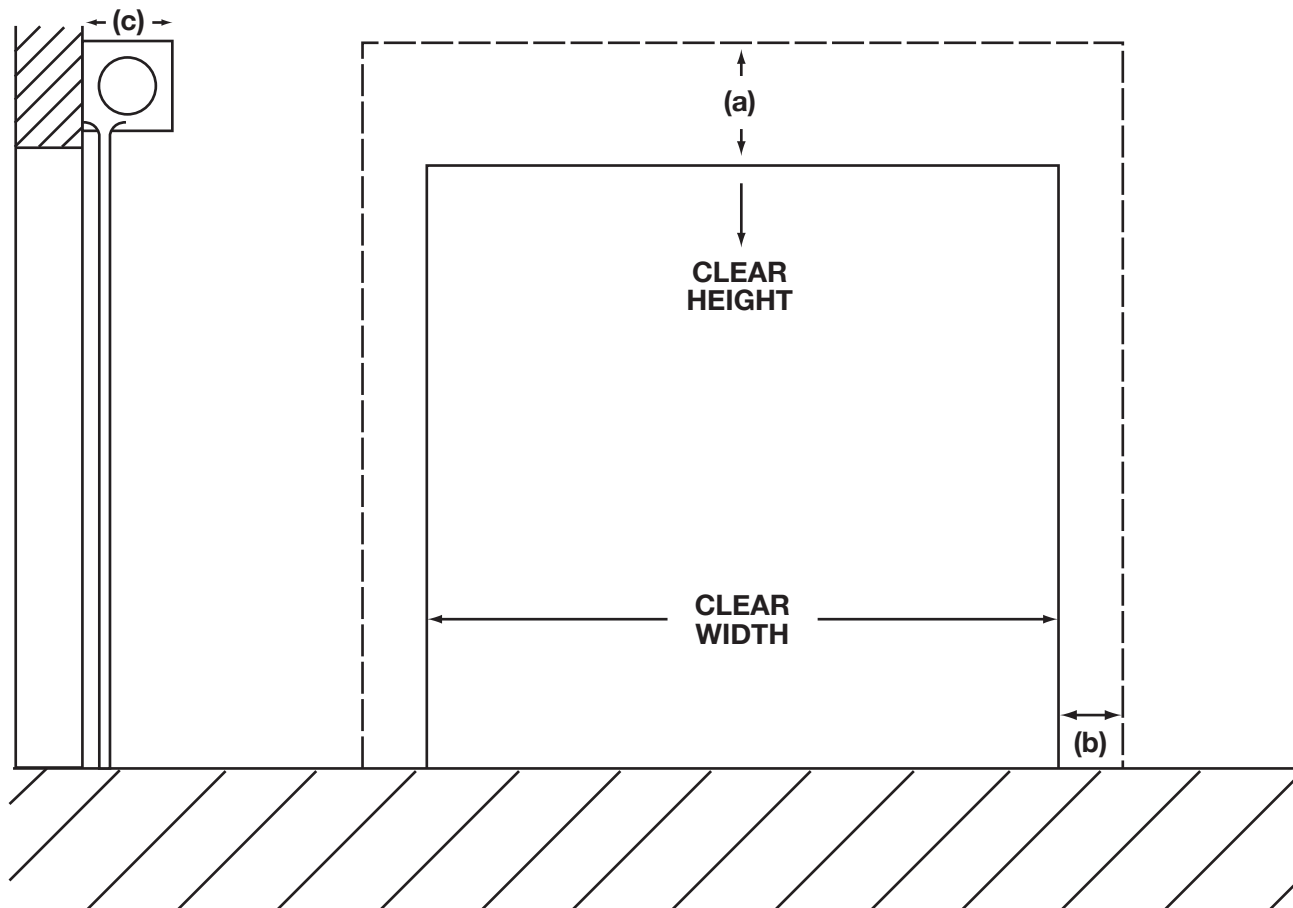
- (a) 0-2500<sup>C/H</sup> = 350 2500 - 5000<sup>C/H</sup> = 400
- (b) STANDARD GUIDE = 85 WIDER DOORS = 105
- (c) 200 OUTBOARD MOTOR 80 INBOARD MOTOR
- (d) SAFETY BRAKE MECHANISM = 50 (L or R HAND)
- (e) 0-2500<sup>C/H</sup> = 300 2500 - 4000<sup>C/H</sup> = 350 4000+<sup>C/H</sup> = 400

### DOOR WEIGHT - GENERAL GUIDE

0-16sqm = CURTAIN 11kg/sqm + 150kg  
 16-25sqm = CURTAIN 15kg/sqm + 300kg

#### NOTE:

**SIDEROOM REQUIREMENT IS INCREASED IF FIXING POINTS IN BRICKWORK ARE INADEQUATE.**

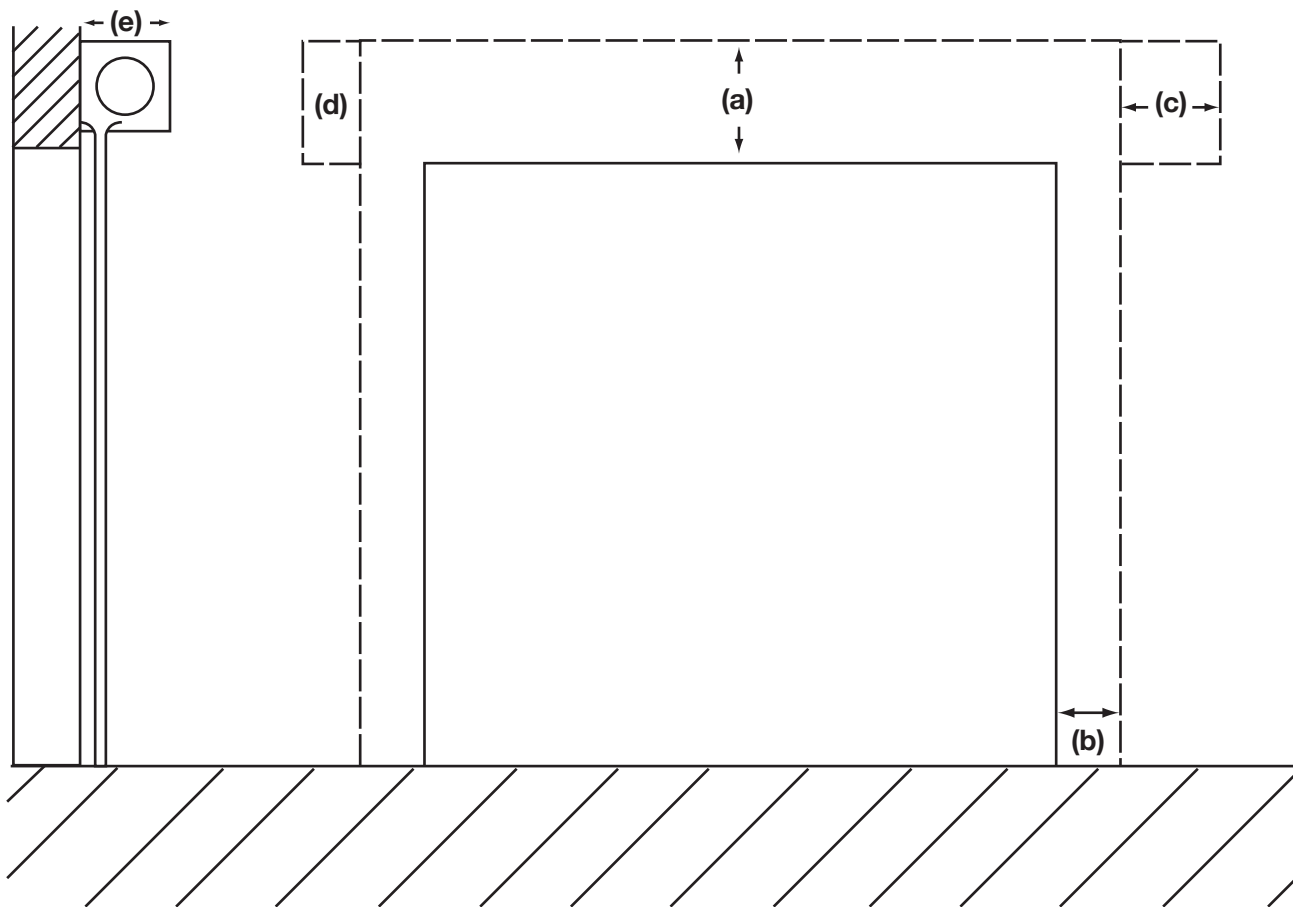


**MANUALLY OPERATED STEEL ROLLER SHUTTER  
PUSH UP/ PULL DOWN OPERATION  
FACE FITTING TO BUILDING FABRIC  
HEADROOM AND SIDEROOM REQUIREMENTS**

(a)  $0 - 2500^{C/H} = 350$   $2500 + ^{C/H} = 400$

(b) CAN BE 55 IF SIDEROOM IS TIGHT STANDARD IS 80.

(c)  $0 - 2500^{C/H} = 300$   $2500 + ^{C/H} = 350$



**ELECTRICALLY OPERATED ROLLER SHUTTER -SINGLE PHASE  
INBUILT TUBULAR MOTOR WITH SAFETY BRAKE**

- (a)  $0 - 2500^{C/H} = 350$   $2500 + ^{C/H} = 400$
- (b) STANDARD GUIDE = 85 WIDER DOOR = 105
- (c) MOTOR SIDEROOM = 80 CAN BE LESS IF MANUAL OVERRIDE IS NOT REQUIRED.
- (d) SAFETY BRAKE MECHANISM = 50 NOTE: NOT REQUIRED WHERE OPENING IS NOT A THOROUGHFARE i.e. WINDOW.
- (e)  $0 - 2500^{C/H} = 300$   $2500 - 4000^{C/H} = 350$

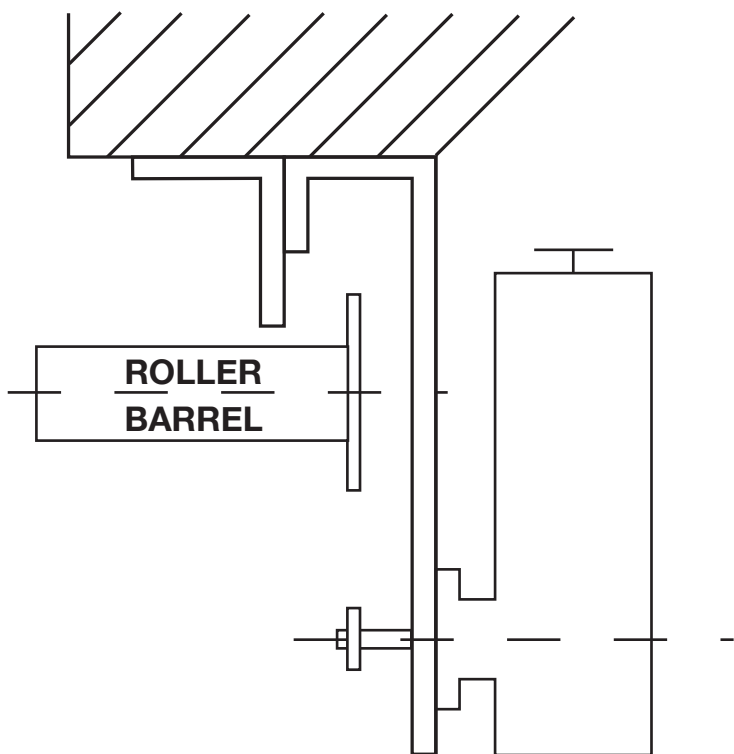
**DOOR WEIGHT - GENERAL GUIDE**

- 0-16sqm = CURTAIN 11sqm + 100kg
- 16-25sqm = CURTAIN 15sqm + 180kg

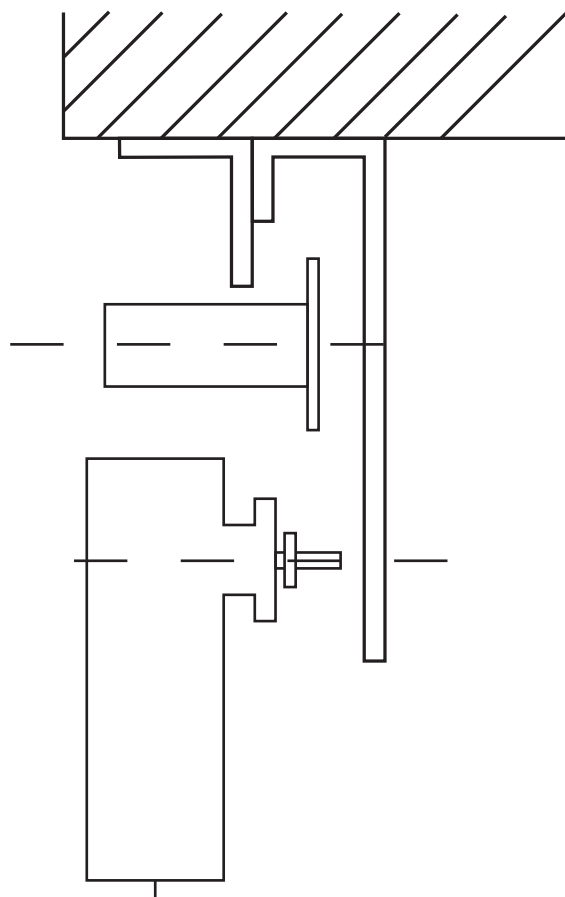


## DRIVE MOTOR CONFIGURATION - EXTERNAL MOUNTING

### STANDARD OUTBOARD



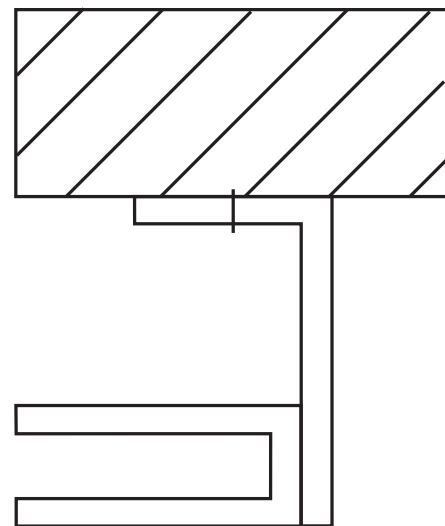
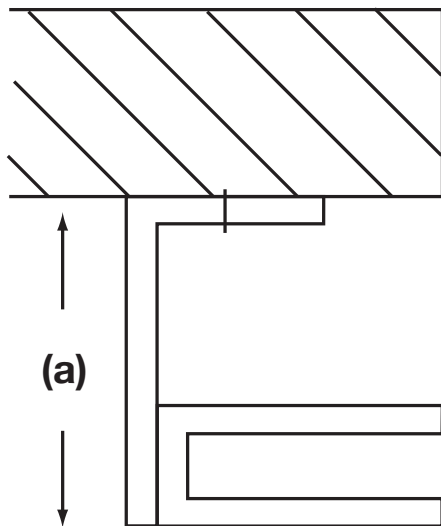
### STANDARD INBOARD



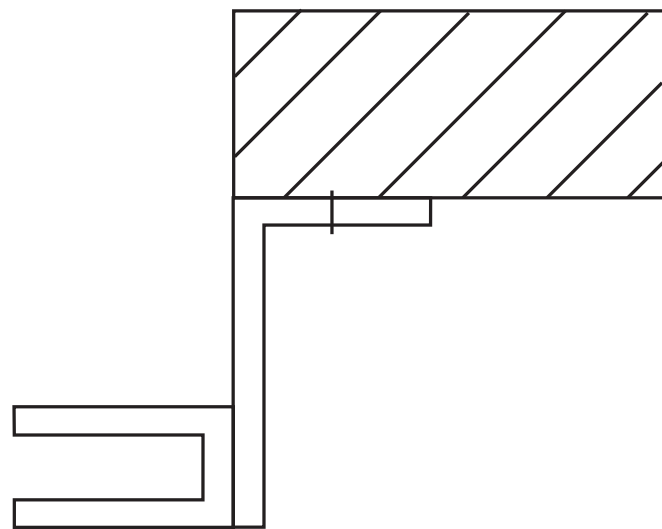
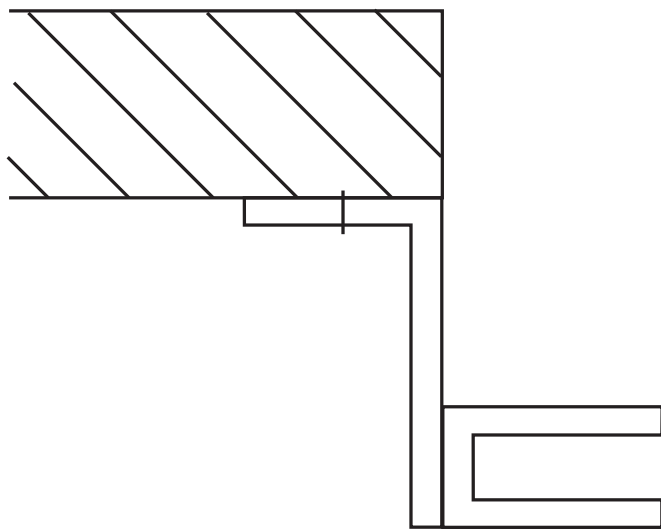
**NOTE: MOTOR CAN ALSO BE FITTED  
ABOVE THE SHUTTER.**



**STEEL ROLLER SHUTTERS  
TYPICAL GUIDE RUNNER/SUPPORT ANGLE LAYOUT**



**STANDARD LAYOUT**



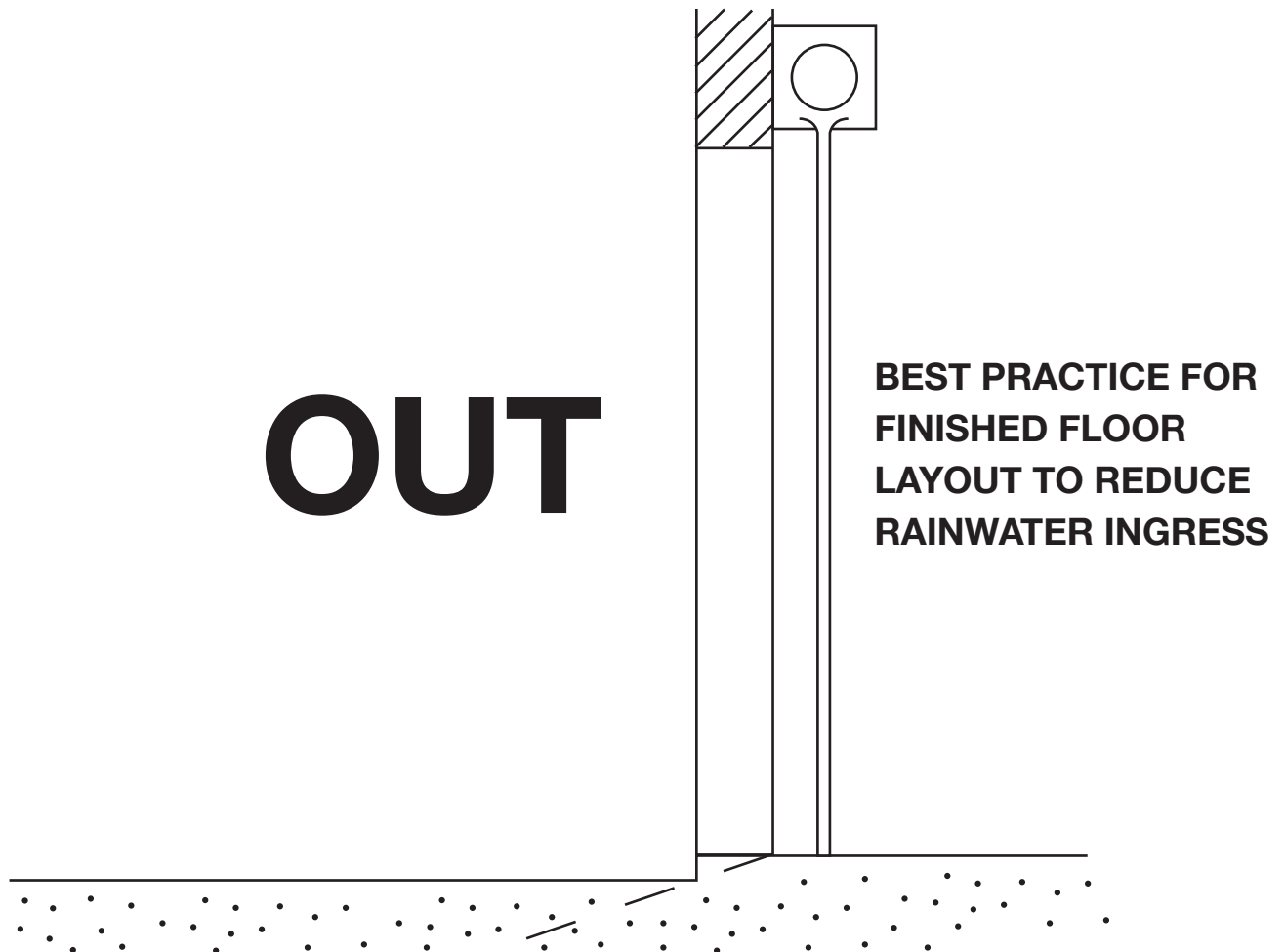
**REVERSE ANGLE LAYOUT USED WHEN SIDEROOM IS TIGHT AT THE TOP.**

**(a) STANDARD 100 - CAN BE 75 ON SMALL SHUTTERS.**



## **STEEL ROLLER SHUTTERS**

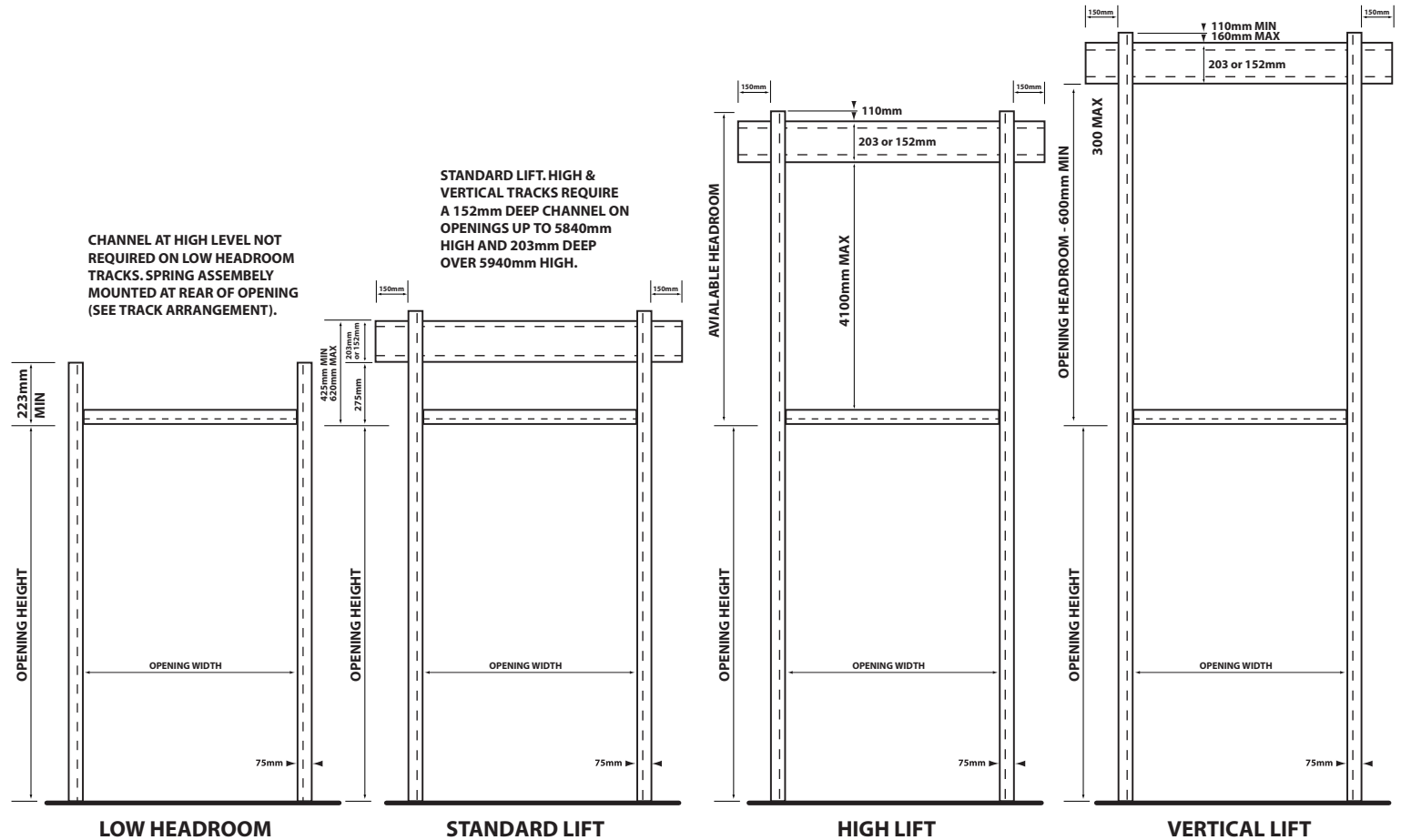
### **NOTES**



- **IF A BRUSH SEAL IS REQUIRED AT THE HEAD OF THE OPENING SHUTTER TO STOP AT LEAST 50 DOWN FROM THE TOP.**
- **'REVERSE COIL' SHUTTER FITTED EXTERNALLY GENERALLY REQUIRE LARGER SHUTTER BOXES DUE TO INCREASED COIL SIZE.**



## SECTIONAL DOOR ARRANGEMENTS

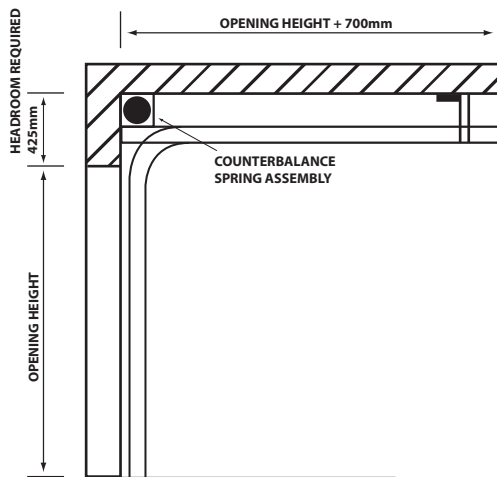


## OPENING REQUIREMENTS

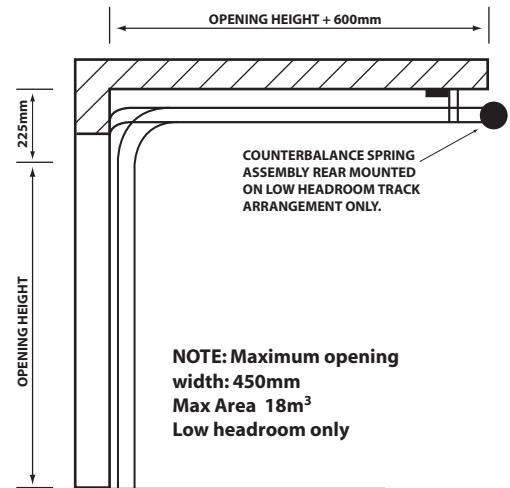
**PLEASE NOTE: A Suitable channel is required across the full width of the opening at high level on all openings and track arrangements (other than low headroom) to support counterbalance spring assemblies.**



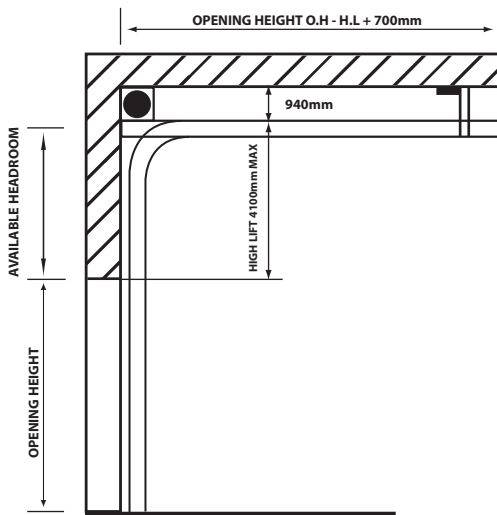
## SECTIONAL DOOR ARRANGEMENTS



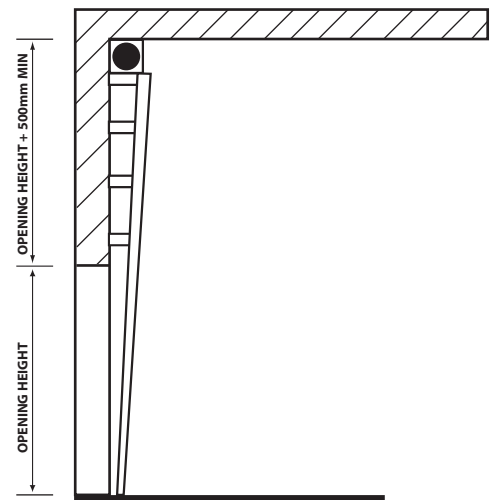
**STANDARD LIFT**



**LOW HEADROOM**



**HIGH LIFT**



**VERTICAL LIFT**

## TRACK ARRANGEMENTS

**PLEASE NOTE:** Minimum clearance between adjacent doors is dependent on track arrangement and position of handchain or drive motor. Please consult us for accurate dimensions.

**PLEASE ENSURE ALL OPENINGS ARE FORMED PLUMB AND SQUARE WITH ALL INTERNAL FACES FLUSH.**

Doors which are installed directly on to steelwork openings provide an ideal weather seal all round. On uneven masonry openings it may be necessary for clients to provide a 125mm x 50mm timber subframe in order to give a flat even fixing surface.

**GENERAL NOTES:** Hand chain operation or electrical drive motors may be positioned on either the right or left hand side of the opening to suit customers requirements. When minimum headroom is not available or where there are obstructions object adjacent to the opening, it may be possible to amend the track detail or re-position the counterbalance springs or high level to suit.

Please contact us for assistance and further information.

**MINIMUM SIDE ROOM REQUIRED: PUSH UP 150mm  
CHAIN OP 250mm  
ELECTRICAL OP 350mm**

**TRACK ARRANGEMENTS TO FOLLOW ROOF PITCH AVAILABLE.**



# **CAMBRIDGE DOOR SERVICES LIMITED**

Cambridge Door Services Limited  
Unit A, 127 Mereside Industrial Estate  
Soham, Cambs, CB7 5EQ, England

**Tel: 01353 725000**

**Fax: 01353 725001**

Email: [info@cambridgedoorservices.com](mailto:info@cambridgedoorservices.com)

Web: [www.cambridgedoorservices.com](http://www.cambridgedoorservices.com)